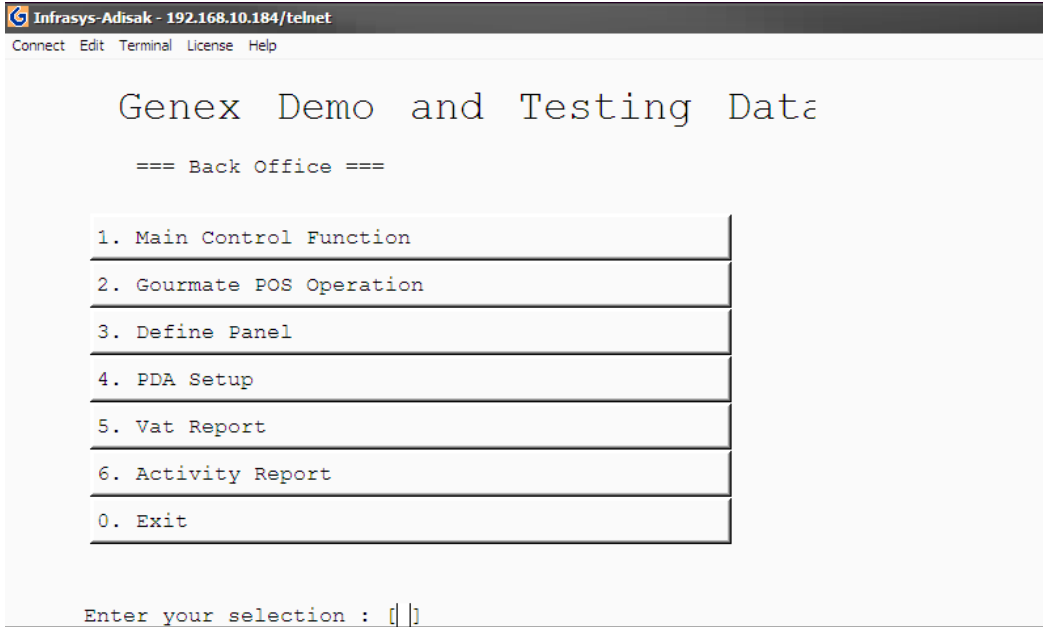




Gourmate® POS Maintenance

การ Assign Password



1. เลือก 1.Main Control Function



2. ใส่ ID and Password

Infrasys-Adisak - 192.168.10.184/telnet
 Connect Edit Terminal License Help
 [902] Coffee shop Tuesday 06/02/09

MAIN CONTROL FUNCTIONS

1	Daily Start	16	*Emergency Procedure
2	Daily Close	17	*Maintenance
3	Change Price Level	18	*Menu Related Maintenance
4	Reset Station	19	*Daily Report
5	Backup or Restore Data	20	*File Listing Report
6	Purge Past Sales Data	21	*Analysis Report
7	Redirect Printer	22	*History Report
8	Change Password	23	*Edit Database
9	Change Language	24	*Special Report
10	Infra-red Download	25	*Special Maintenance
11	Re-start infra-red	26	*Edit Pastdate Check
12	Re-start printers	27	External Program
13	Test printers	28	*Payment Time Report
14	Re-start ECR	29	*Revenue Report
15	Stop system printer job	30	Switch Outlet

Enter Option [**17**] (0 to exit) *Sub menu

CANCEL	0	1	2	3	4	5	6	7	8	9	.	BS	OK
--------	---	---	---	---	---	---	---	---	---	---	---	----	----

3. เลือก 17. *Maintenance

Infrasys-Adisak - 192.168.10.184/telnet
 Connect Edit Terminal License Help
 [902] Coffee shop Tuesday 06/02/09

Maintenance

1	Employee	16	File Re-index
2	Discount Types for Check	17	Recover Data Files
3	Discount Types for Item	18	Assign new ECR Password
4	Meal Period for Check Analysis	19	Set Soldout List
5	Meal Period for Item Analysis	20	Special Message
6	Tax and Service Charge	21	Void Reason
7	Foreign Currency Rate Table	22	Define Function Touch Panel
8	Auto Check Discount	23	Define Budget
9	Employee Department	24	PMS Package
10	Assign Authority Class	25	Credit card Security Control
11	Assign Password	26	
12	Function Lookup List	27	
13	Outlet Information	28	
14	Staff Id Card	29	
15	Paytype Maintenance	30	

Enter Option [**11**] (0 to exit)

CANCEL	0	1	2	3	4	5	6	7	8	9	.	BS	OK
--------	---	---	---	---	---	---	---	---	---	---	---	----	----

4. เลือก 11. Assign Password

Infrasys-Adisak - 192.168.10.184/telnet
 Connect Edit Terminal License Help
 [902] Coffee shop Tuesday 06/02/09

Maintenance

1	Employee	16	File Re-index
2	Discount Types for Check	17	Recover Data Files
3	Discount Types for Item	18	Assign new ECR Password
4	Meal Period for Check Analysis	19	Set Soldout List
5	Meal Period for Item Analysis	20	Special Message
6	Tax and Service Charge	21	Assign Password
7	Foreign Currency Rate Table	22	Function Touch Panel
8	Auto Check Discount	23	Employee ID * [REDACTED]
9	Employee Department	24	Security Control
10	Assign Authority Class		
11	Assign Password		
12	Function Lookup List		
13	Outlet Information	28	
14	Staff Id Card	29	
15	Paytype Maintenance	30	

Enter Option [|] (0 to exit)

CANCEL 0 1 2 3 4 5 6 7 8 9 . BS OK

5. ใ้รหัสพนักงานที่ต้องการ Assign Password เช่น 1

Infrasys-Adisak - 192.168.10.184/telnet
 Connect Edit Terminal License Help
 [902] Coffee shop Tuesday 06/02/09

Maintenance

1	Employee	16	File Re-index
2	Discount Types for Check	17	Recover Data Files
3	Discount Types for Item	18	Assign new ECR Password
4	Meal Period for Check Analysis	19	Set Soldout List
5	Meal Period for Item Analysis	20	Special Message
6	Tax and Service Charge	21	Assign Password
7	Foreign Currency Rate Table	22	Function Touch Panel
8	Auto Check Discount	23	Employee ID 00001
9	Employee Department	24	New Password * [REDACTED]
10	Assign Authority Class	25	(Infrasys)
11	Assign Password		
12	Function Lookup List		
13	Outlet Information	28	
14	Staff Id Card	29	
15	Paytype Maintenance	30	

Enter Option [|] (0 to exit)

CANCEL 0 1 2 3 4 5 6 7 8 9 . BS OK

6. ใ้รหัสผ่าน แล้วกด OK แล้วทำการใ้รหัสผ่านอีกครั้ง แล้วกด OK

Maintenance

1	Employee	16	File Re-index
2	Discount Types for Check	17	Recover Data Files
3	Discount Types for Item	18	Assign new ECR Password
4	Meal Period for Check Analysis	19	Set Soldout List
5	Meal Period for Item Analysis	20	Special Message
6	Tax and Service Charge	21	Void Reason
7	Foreign Currency Rate Table	22	Define Function Touch Panel
8	Auto Check Discount	23	Define Budget
9	Employee Department	24	PMS Package
10	Assign Authority Class	25	Credit card Security Control
11	Assign Password	26	
12	Function Lookup List	27	
13	Outlet Information	28	
14	Staff Id Card	29	
15	Paytype Maintenance	30	

Enter Option [|] (0 to exit)

CANCEL	0	1	2	3	4	5	6	7	8	9	.	BS	OK
--------	---	---	---	---	---	---	---	---	---	---	---	----	----

7. เสริมสินการอัพเดท

